

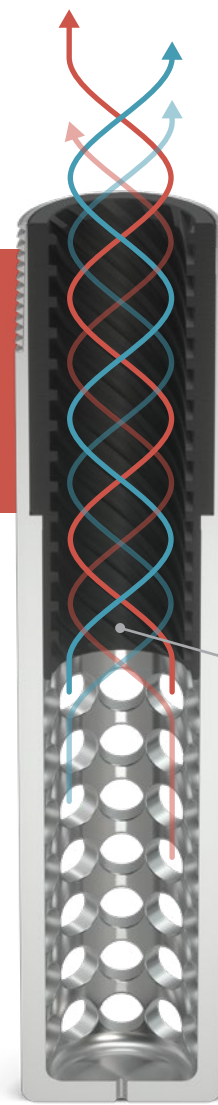
SharkSPIN™



SharkSPIN is a final step, flow-conditioning technology that promotes better pump fillage and efficiency. Swirl flow insert is made of advanced 3D-printed composite material to control scale and corrosion risks.

SharkSPIN Explained

By 3D printing unique shapes and geometries typically not possible with traditional machining methods, we can manipulate flow characteristics like never before.



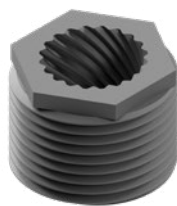
SWIRL FLOW

Designed on the principle that the rotation/rise of 45° is the most versatile for managing inconsistent flow conditions associated with rod pump cycles.



Standing Valve Insert

Compatible with all API sucker rod pumps, this version is installed just below seat.



Traveling Valve Insert

Used in tandem with the standing valve insert, this insert is installed in place of a traditional hex nut.



Seating Nipple Carrier

Meant for high-rate/volume fluid with solids issues. It doubles as a strainer nipple and is installed below the seat nipple.

SharkSPIN In Action



Improves pump efficiency and reliability by:

- > Reducing pressure loss across the standing valve
- > Avoiding foam generation and solution gas liberation (which increases pump gas interference)
- > Preventing damaging “valve chatter” associated with inconsistent gas and fluid flows



Ask about WhaleShark™

Simply combine SharkSPIN with our patented WhaleShark packerless gas separator for improved entrained gas separation. Visit silverenergy.com/downhole for more information.

SharkSPIN Accessory Specifications

| Accessory for | Standing Valve | Traveling Valve | Seat Nipple Carrier |
|--------------------------------|--|-----------------|---------------------|
| Connection | 1.25 LPT | TBD | 1.25 LPT |
| Outside Diameter, in [mm] | 1.0 [25.4] | TBD | 1.66 |
| Integrated Strainer Option | no | no | yes |
| Ratings | | | |
| Temperature °F [°C] | 300 [150] | 300 [150] | 300 |
| Corrosion Resistance | 100% | 100% | 100% |
| Static Coefficient of Friction | 0.15 | 0.15 | 0.15 |
| Composite Material | Onyx micro carbon fiber-filled nylon, reinforced with HSHT FG and Kevlar | | |

For more information contact: sales@silverenergy.com