

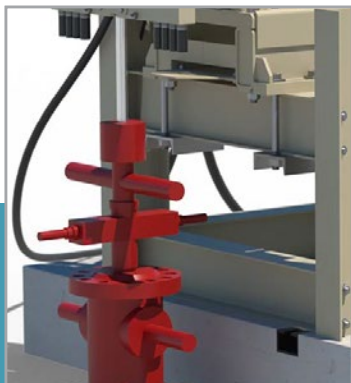
SilverJack 8000



SilverJack is to pump jacks what the smartphone is to the cell phone market. It's a smart but incredibly simple pumping unit that intelligently strokes rod pump wells better and more efficiently than a conventional pumping unit.

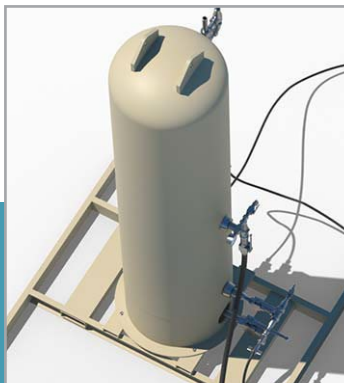
Rod String Control Nets More Production

- Lower peak rod velocity means less rod stretch and no rod buckling issues
- Same stroke speed as a conventional pumping unit, but more production
- More time spent at peak velocity



Simplified Installed

Installs similarly to a pumping unit or Rotaflex without the frustrating alignment issues.



Counter Balanced

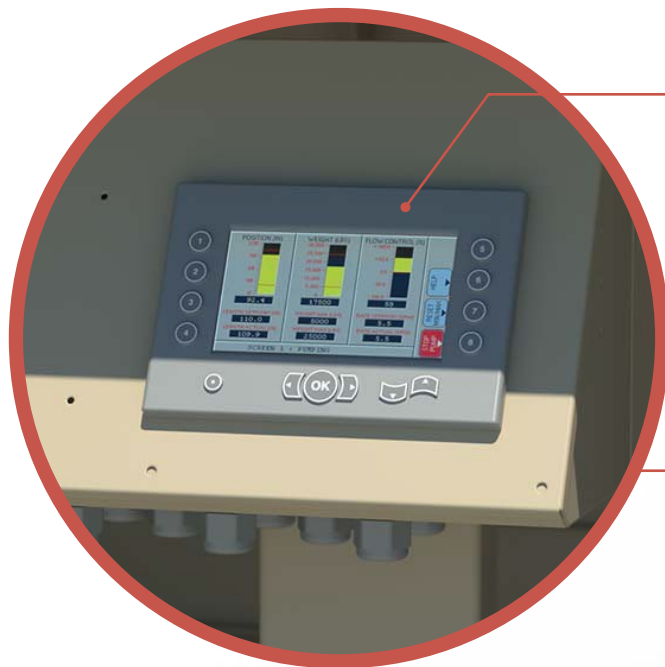
Utilizing low pressure nitrogen in a stand alone vessel, SilverJack can handle peak polish rod loads of 45Klbs.



Long Stroke, Short Structure

Using a redundant cable system, SilverJack can provide up to 240" of stroke in a short structure. This provides low environmental footprints.

SilverJack 8000 Features



AI-BASED PUMP OFF CONTROL

- Timer mode
- Gas interface ,mode
- Pump clean-out routine
- Remote control via web app or SCADA integration

AUTOMATED NITROGEN COUNTERBALANCE

HYDRAULIC POWER UNIT

- Well gas
- Electric

AUTOMATED PULLEY LUBRICATION

Requires minimal maintenance for trouble-free operation

PRECISION POSITION SENSORS

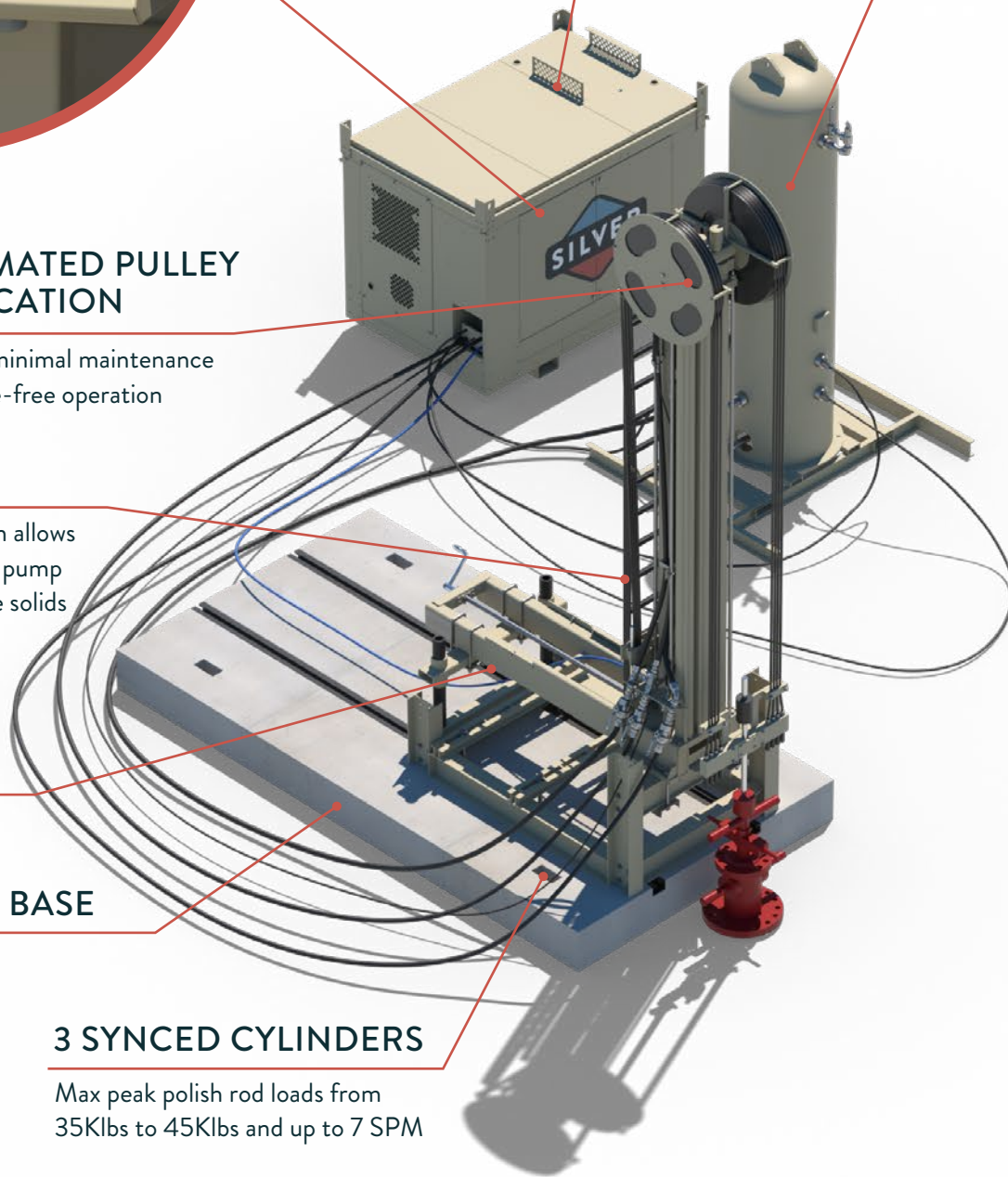
Knowing your precise stroke position allows the controller to optimize downhole pump action, run shorter stroke to manage solids and stuck pumps, and more

ADJUSTABLE ALIGNMENT BASE

CONCRETE BASE

3 SYNCED CYLINDERS

Max peak polish rod loads from 35Klbs to 45Klbs and up to 7 SPM



SilverJack 8000 Specifications



Max Stroke

240"

Max Stroke Speed

7SPM

PPRL

35Klbs or 45Klbs

Rate Capability

1050bbls/d*

*Average rates based on known deeper installations (see chart)

EPA Compliant NG Engine

100HP

Electric Motor

480VAC 3PH 100HP

Mounting

8' x 16' Concrete base, Piles required for open cellar installations, 8' x 4' Nose Pad Optional

Automated Counterbalance

Nitrogen

Pump Off Control

Yes

Gas Interference Mode

Yes

Pump Clean-out Routine

Yes

Automated Tag Adjustment

Yes

Remote Control/Adjustment

Yes*

*Requires subscription to Emerson (Zedi Access) or SCADA integration

Remote Alarming

Yes*

*Requires subscription to Emerson (Zedi Access) or SCADA integration

Variable Stroke Length Adjustment

.25" Increments (1"-240")

Stroke Ratio Adjustment

Yes

Onsite Surface & Downhole Dyna Cards

Yes

Third-Party SCADA Compatibility

Yes (MODBUS)

Applications

Deep, Deviated, High-volume wells, ESP or Gas lift conversion

Replaces/Competitive to

Rotaflex, Conventional & Enhanced Geometry Pumping Units ranging from 1280, 912, and 640

Hydraulic Power Unit (HPU)

Weight (Dry)

6,200lbs

Dimensions

60"W x 96"L x 68"H

Structure

Height

26ft/13.5ft*

*Extended/Compressed

Weight

7,500lbs

Nitrogen Skid Assembly

Vessel

24"OD x 96" CODED AMSE

Overall Dimensions

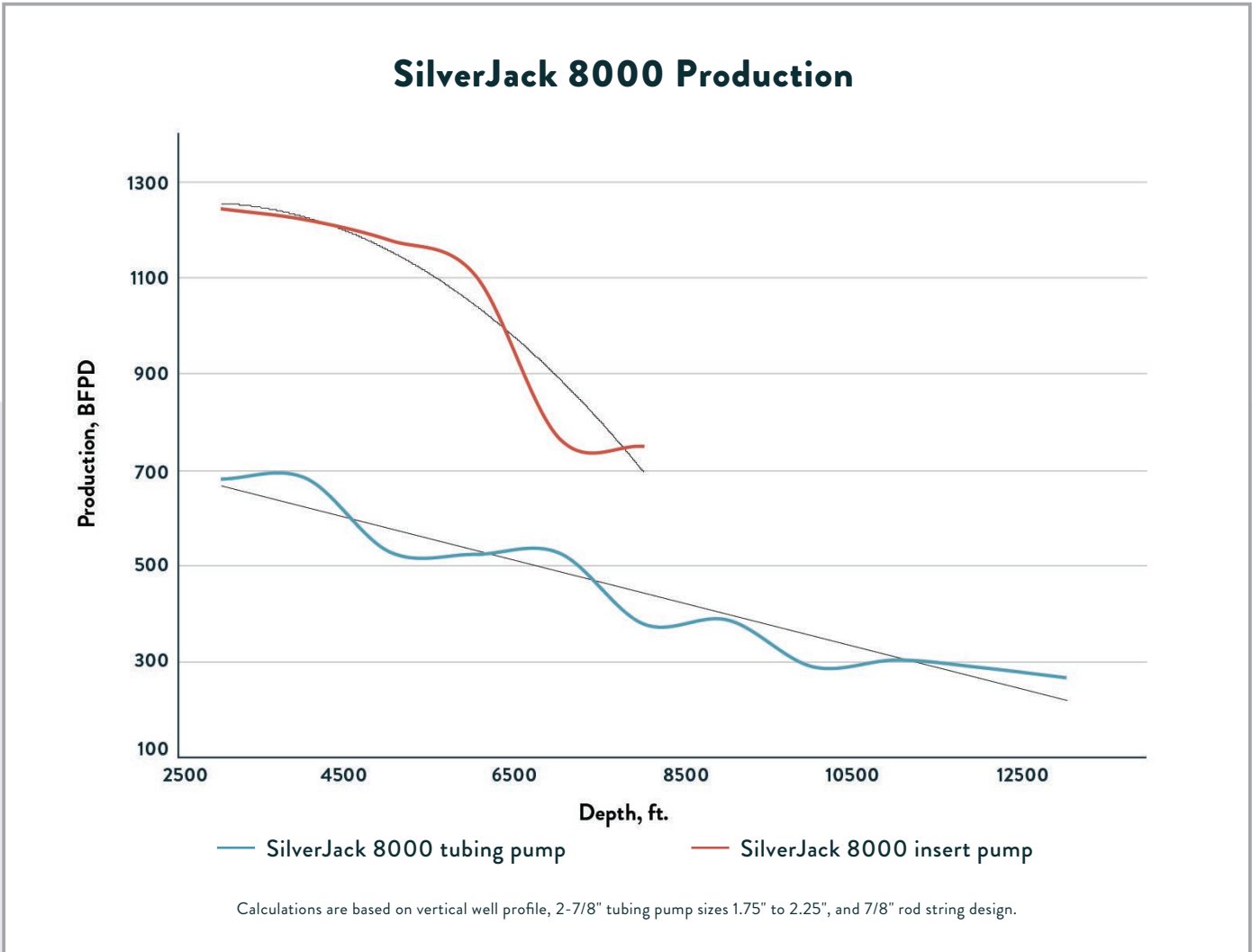
30"W x 48"L x 101"H

Weight (Dry)

5,000lbs



HOW MUCH FLUIDS CAN SILVERJACK PRODUCE?



SilverJack 8000 will outperform long stroke pumping units not only in production but in capital costs. Full automation and remote monitoring and control are standard. Each unit comes complete with concrete base, frames hardware and counter balance. We can install typically in half a day.

For more information contact: sales@silverenergy.com